

## NEW OFFICE CONDOMINIUMS FOR SALE



17758 Hornbean Dr.  
Chesterfield, MO 63005

phone: (636) 537-1001  
fax: (636) 537-1009

COMMERCIAL  
REAL ESTATE SERVICES:

Landlord & Tenant Representation

Acquisitions & Sales

Land Development

Consulting

• • •

VISIT OUR WEBSITE:  
[www.scottjenkinscompany.com](http://www.scottjenkinscompany.com)

Individual Member



Certified  
Commercial  
Investment Member

*For Sale Information,  
Please Contact:*

SCOTT C. JENKINS, CCIM  
[scottj@scottjenkinscompany.com](mailto:scottj@scottjenkinscompany.com)

SPIRIT CORPORATE CENTER  
687 Trade Center Blvd  
Suites 110, 120, 130  
Chesterfield, MO 63005

**Premium Executive  
Office Condos  
1,444-1,713 SF gross**



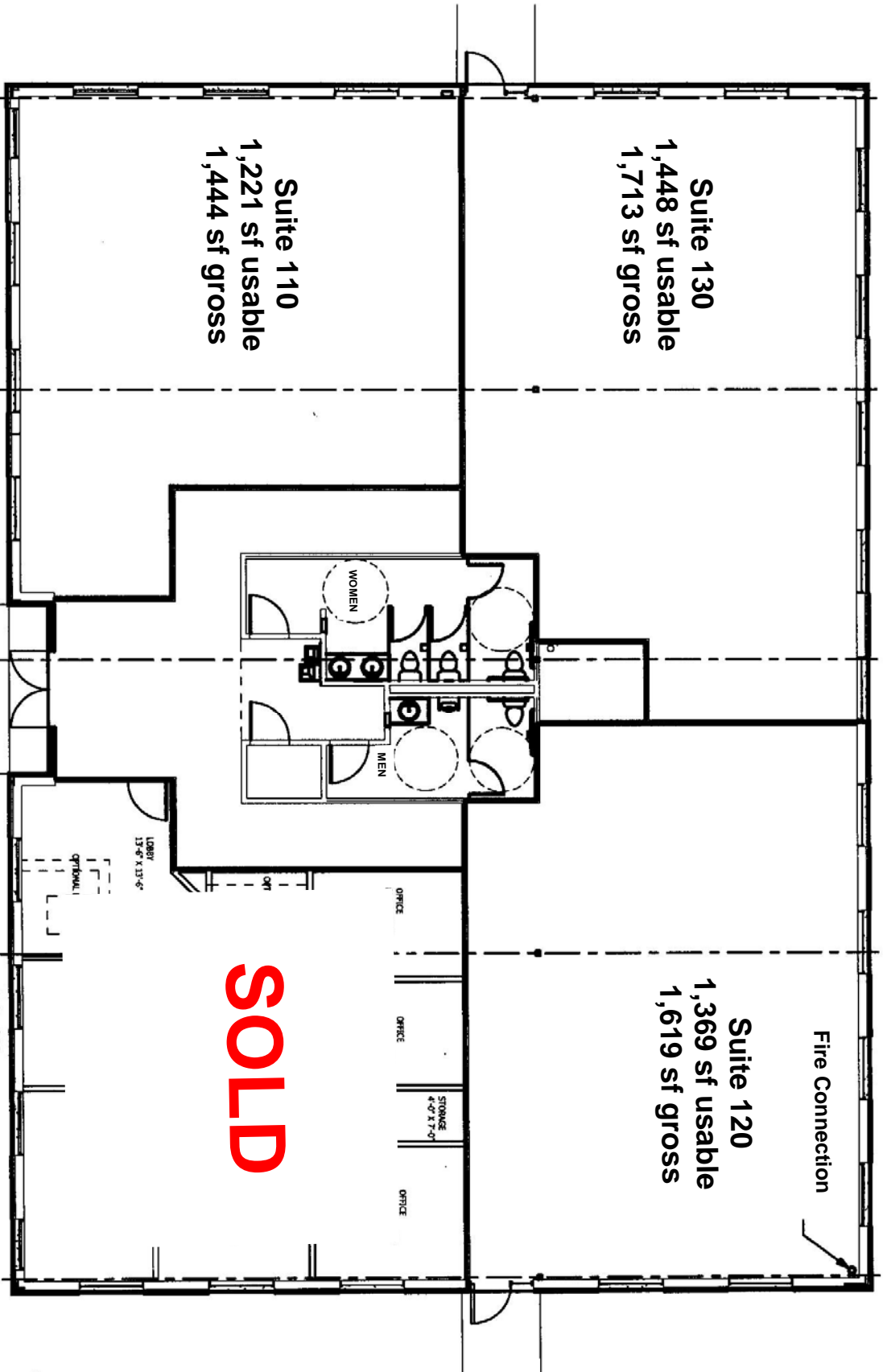
### BUILDING "F" AT THE SPIRIT CORPORATE CENTER

- SALE PRICE: \$175 per square foot/white box finish
- Suite 110: 1,444 square feet gross
- Suite 120: 1,619 square feet gross
- Suite 130: 1,713 square feet gross
- Located at corner of Chesterfield Airport Rd. and Trade Center Blvd.
- Part of 5-Building Office Campus
- On-site property management
- "Turn-key" build-out to exacting standards by Fischer & Frichtel
- Premium interior finishes available
- Energy efficient windows
- State-of-the-art climate control systems
- Abundant neighborhood amenities
- See Site and Building plans on following pages

*\*The information contained in this publication has been provided by sources deemed reliable but has not been verified. Broker makes no express or implied warranties or representations regarding its accuracy and submits such information subject to change without notice.*

# SPIRIT CORPORATE CENTER SITE PLAN





*Spirit Corporate Center/Building F*

**SOLD**

